

COMMUNITY ENGAGEMENT STUDY

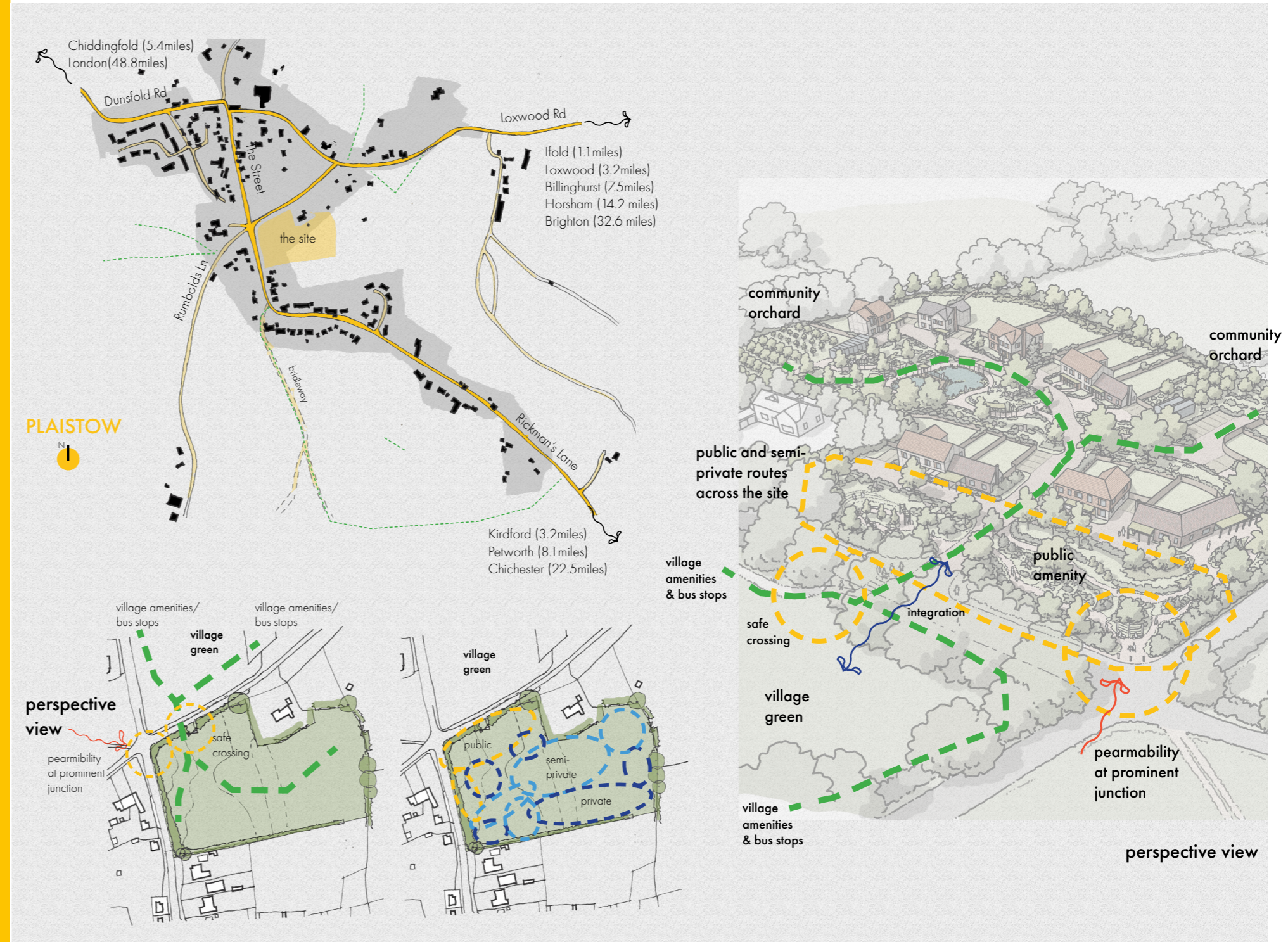
Land on the north side
of The Street
Plaistow, Billingshurst,
RH14 0NS

The proposal will be driven by engaging the community. It is hoped that the proposals promote and integrate new landscapes for the local community.

The site has been assessed to:

- safeguard and offer more pedestrian routes to the heart of the village
- to provide access to community spaces
- offer a new community orchard

WIDER COMMUNITY INTEGRATION



*existing site context analysis and selected diagrams